

# AvivaFix™

Conductive Garment - Knee

## Intended Use

AvivaFix Conductive Garment - knee (AvivaFix Knee) is a conductive garment intended for use in conjunction with AvivaStim and AvivaTens devices. It is intended to aid in the correct and repeatable positioning of large, multiple treatment and difficult to reach treatment sites associated with the knee area.

## Precautions and Warnings

Do not use when wet. The garment and conductive gel pads are single person use only. Ensure the conductive garment is positioned as advised by your health care professional for each session. When changing gel pads, ensure they are replaced in their original positions as advised by your health care professional. AvivaFix Knee is not a support garment. Do not use if the leads' sheathing is damaged and the copper wire is exposed.

## Contents

AvivaFix Conductive Garment - Knee  
(P/N: 1270-1110)  
Pack of Velcro®-backed Gel pads  
Instruction Literature

## Accessories

Replacement gel pads: pack of four (4) velcro-backed 5cm round.  
Part #4532-0061.

## Trouble Shooting

<b>Problem:</b>	No stimulation felt
<b>Possible cause:</b>	Liners not removed Unit not connected Leads disconnected
<b>Solutions:</b>	Remove liners Connect unit Connect leads

## AvivaFix Knee is approved for use with the following devices:

Neurotech AvivaStim™ or AvivaTens™

## Environmental Specifications

**Operating conditions:** Temperature: 0 - 35°C / 32 - 95°F  
Humidity: 20 to 65% RH

**Storage conditions:** Temperature: 0 to 55°C / 32 to 131°F  
Humidity: 10 to 90% RH








Velcro® is a registered trademark of Velcro Industries B.V.

## Garment Material

**Outer material:** 80% Nylon, 20% Elastane  
**Inner material:** 100% Polyurethane  
**Fastening:** 100% Nylon  
**Fastening hook:** 100% Nylon

## Caring for your Conductive garment

Remove the gel pads before washing.  
Handwash in lukewarm soapy water.  
Dry on a flat surface.  
Ensure gel pads are replaced in their original positions.

-  Read manual before use
-  Handwash
-  Do not iron
-  Do not tumble dry
-  Do not dry clean
-  Do not bleach
-  This symbol on your conductive garment is to indicate conformity to the medical device directive (93/42/EEC)

## Fits size range:

**Lower thigh circumference:** 39cm - 53cm / 15" - 21"  
**Upper calf circumference:** 30cm - 42cm / 12" - 16.5"

One-year warranty

## Disposal Advice

Used gel pads and conductive garment may never be disposed in a fire, but in accordance with your country's national laws governing the disposal of such items.

## Designed by & Manufactured for:

 Neurotech®  
A Division of Bio-Medical Research Ltd.  
PO Box 5179  
Hoboken, NJ 07030

## If you have questions or require further information please contact:

Neurotech  
Tel: 800-901-5667  
Web: www.neurotech.us

Rx  
Only

neurotech®  
embrace life.

**AvivaFix™**  
Conductive Garment

**KNEE**



neurotech®

**AvivaFix™**

Designed by & Manufactured for:  
Neurotech  
A Division of Bio-Medical Research Ltd.  
PO Box 5179  
Hoboken, NJ 07030  
800-901-5667  
www.neurotech.us

Copyright © 2011 Bio-Medical Research Ltd. All rights reserved.

Caution: In the United States of America federal law restricts the device to sale or use by, or on the order of a physician or other practitioner licensed by the laws of the state in which he/she practices. neurotech® and AvivaFix™ are trademarks of Bio-Medical Research Ltd.

Part number: XXXX-XXXX  
Issue date: 10/11  
Rev. 1

Made in China.

**INSTRUCTIONS FOR USE**

# AvivaFix™

## Conductive Garment - Knee

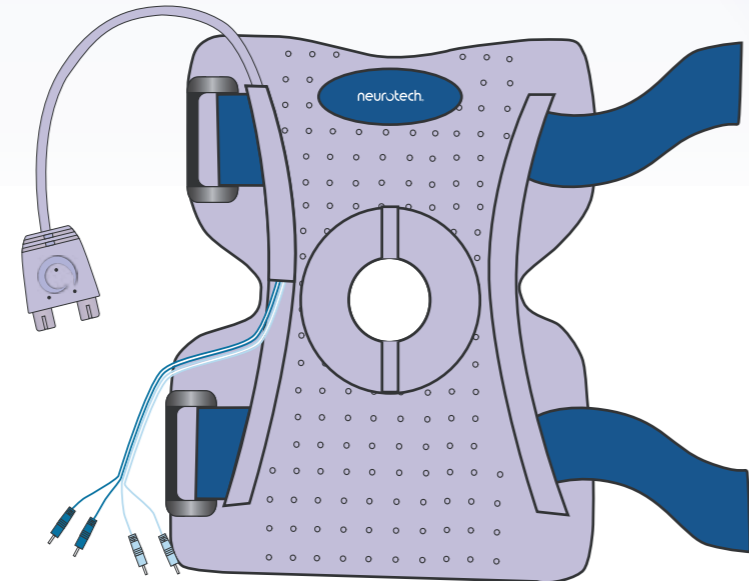
### Getting started - Contents:



Instructions for use



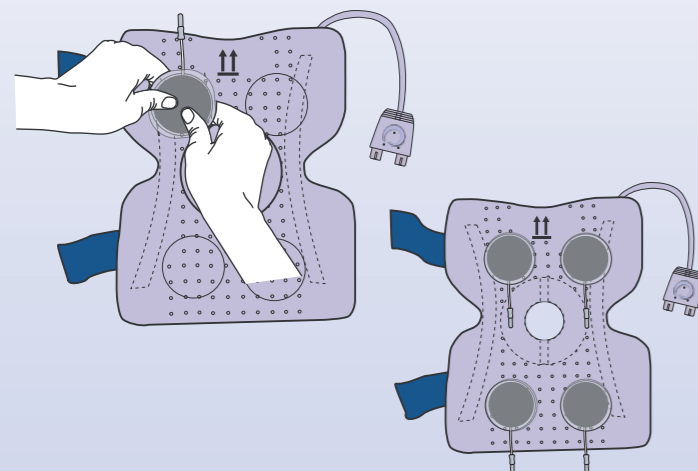
Velcro®-backed conductive gel pads



AvivaFix Conductive Garment - Knee

#### Step 1.

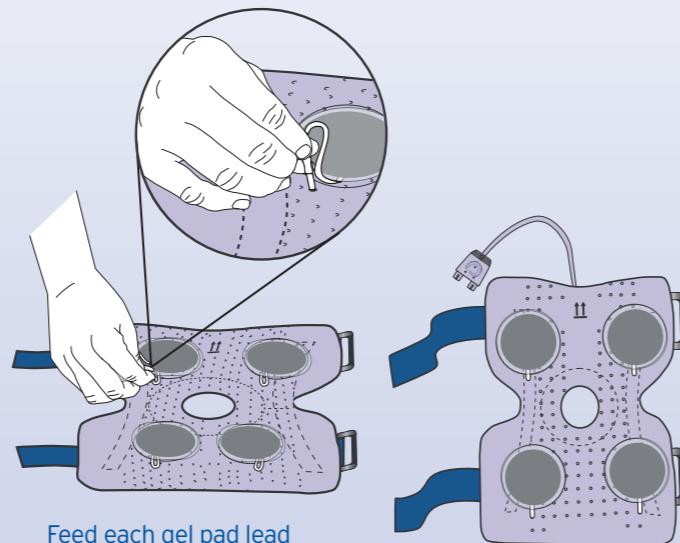
Position the gel pads on the conductive garment, as recommended by your health care professional.



! Ensure the Velcro® side of the gel pad is on the garment.

#### Step 2.

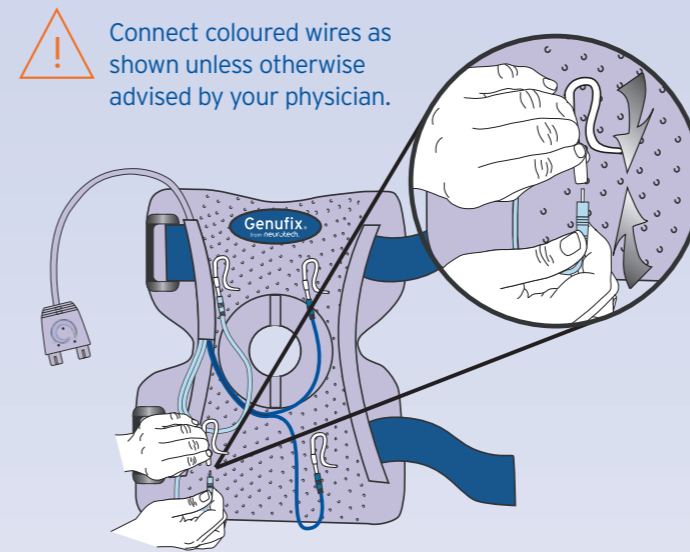
Feed gel pad leads through garment.



Feed each gel pad lead through the nearest hole.

#### Step 3.

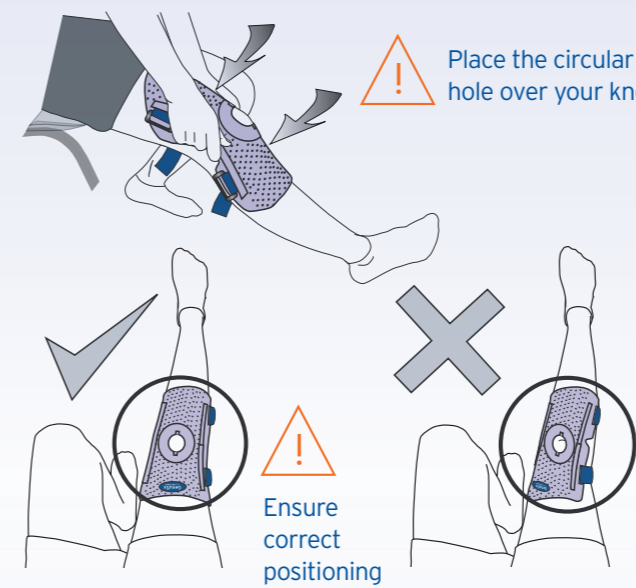
Connect gel pads leads to wires.



! Connect coloured wires as shown unless otherwise advised by your physician.

#### Step 5.

Position garment on leg.

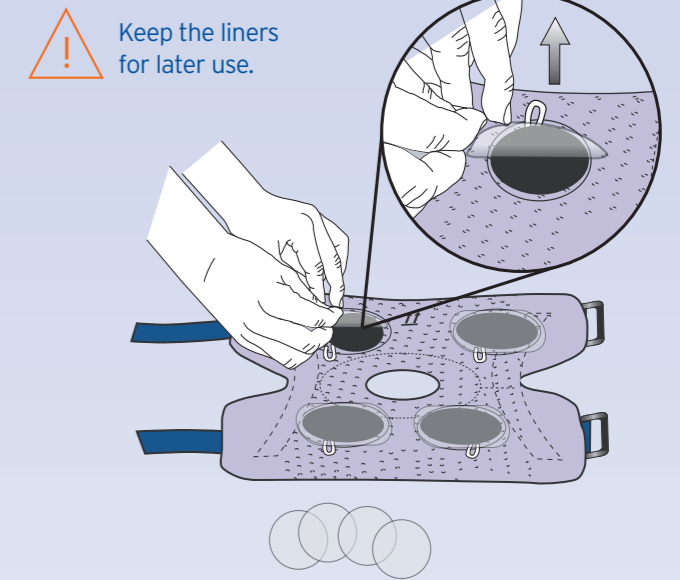


! Place the circular hole over your knee.

! Ensure correct positioning

#### Step 4.

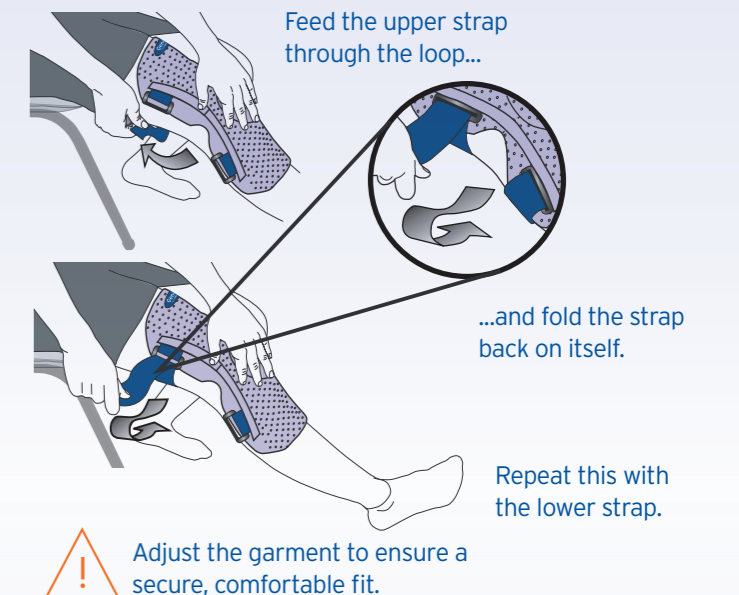
Remove gel pad liners.



! Keep the liners for later use.

#### Step 6.

Fasten straps on garment.



Feed the upper strap through the loop...

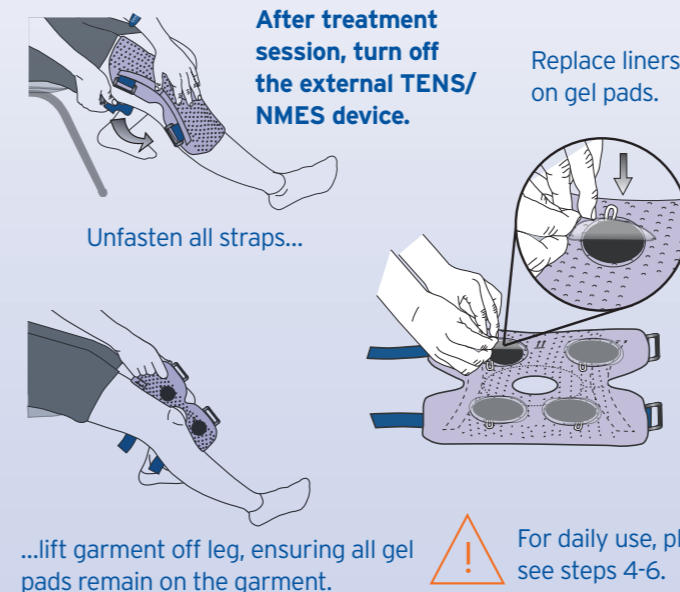
...and fold the strap back on itself.

Repeat this with the lower strap.

! Adjust the garment to ensure a secure, comfortable fit.

#### Step 7.

Removing the garment.



After treatment session, turn off the external TENS/ NMES device.

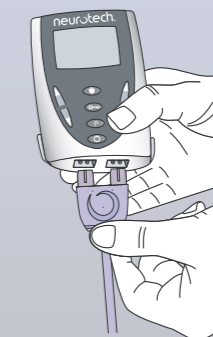
Replace liners on gel pads.

Unfasten all straps...

...lift garment off leg, ensuring all gel pads remain on the garment.

! For daily use, please see steps 4-6.

### Using AvivaFix Conductive Garment with a TENS or NMES device



#### Warning:

Use only an approved neurotech® device: AvivaTens or AvivaStim  
Before connecting AvivaFix Conductive Garment to a TENS or NMES device, always read and carefully follow the safety advice and user instructions supplied with the TENS or NMES device.

#### Before treatment session:

Remove the liners from the gel pads.  
Apply and secure AvivaFix Conductive Garment  
Activate the external TENS or NMES device.

Connect lead plug to device as shown here.